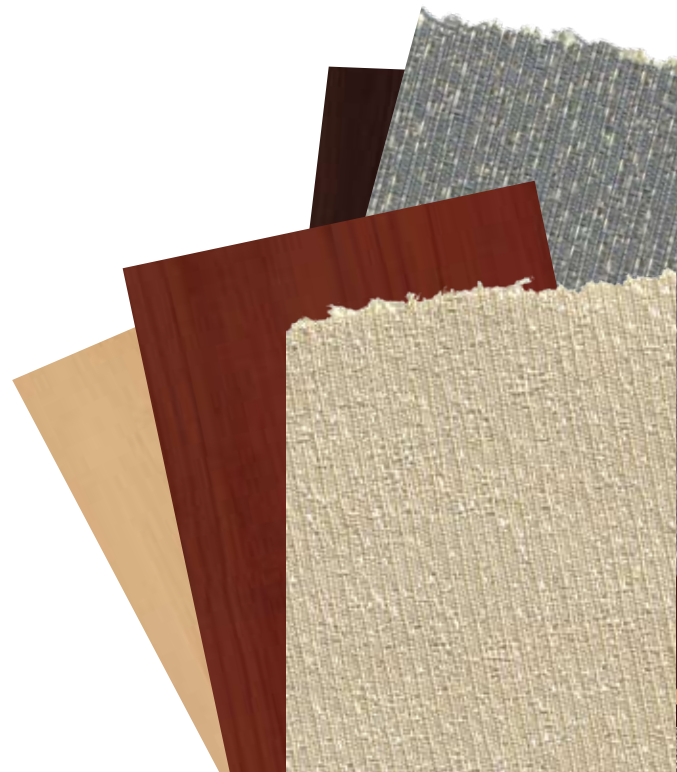


WORKPLACE  
**emporium**

# QUICKSHIP

5 and 10 Day  
Finishes/Fabrics

for System 2

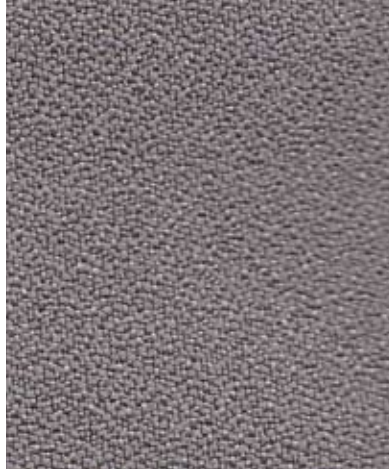


# SLIDE

5  
DAY



**5** PF101-1 CARAMEL



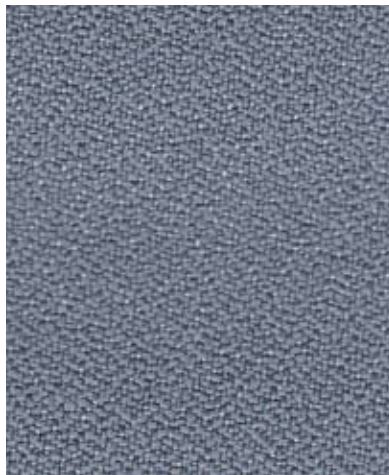
**5** PF101-2 SLATE



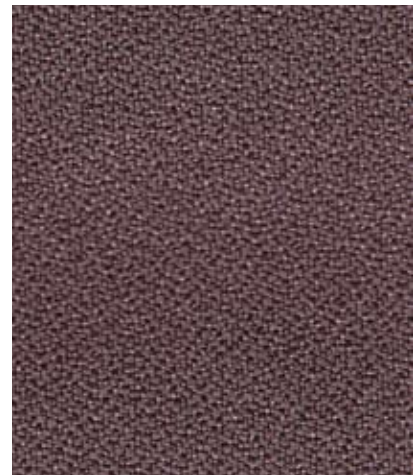
**5** PF101-3 PEWTER



**5** PF101-4 VERDE



**5** PF101-5 TWILIGHT



**5** PF101-6 VINTAGE



**5** PF101-7 JAVA



**5** PF101-8 LATTE

QUICKSHIP

**5** = 5 DAY ITEMS

**10** = 10 DAY ITEMS

# SILKY

10  
DAY



**10** PF401-1 NATURAL



**10** PF401-2 PARIDS



**10** PF401-3 OVERCAST



**10** PF401-4 FIELD



**10** PF401-5 GRAPHITE

## QUICKSHIP

**5** = 5 DAY ITEMS

**10** = 10 DAY ITEMS

# STICKS

10  
DAY



10 PF501-1 SMOKE



10 PF501-2 ALMOND



10 PF501-3 SAGE



10 PF501-4 STRAW

# SKY

10  
DAY



10 PF301-1 TERRA



10 PF301-2 BIRCH

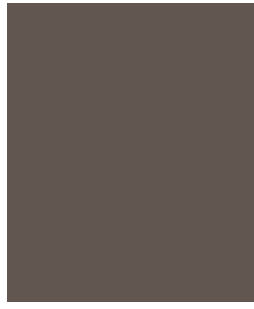


10 PF301-3 MOSS

# WORKSURFACE EDGE FINISHES



**DT** DARK TONE



**MT** MEDIUM TONE

**5** = PVC Edge Trim/DT Only

**10** = PVC Edge Trim/DT&MT

## WORKSURFACES



FUSION MAPLE



WILD CHERRY



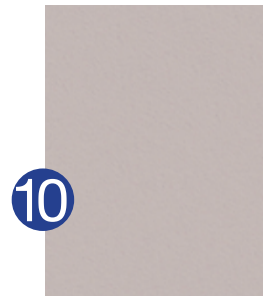
BILTMORE  
CHERRY



FIGURED MAHOG



ANTIQUE WHITE



FEATHERSTONE

### End Panels Only:

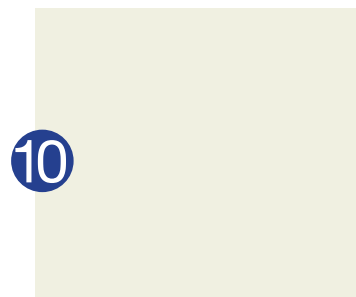


BLACK

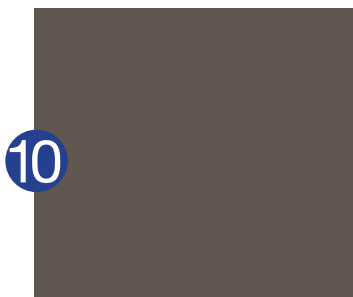


SLATE GRAY

## PAINT



**LG** LIGHT GRAY



**MT** MEDIUM TONE



**DT** DARK TONE

# FABRIC SPECIFICATIONS

Pattern	Content	Weight	Width	Flammability
<b>SLIDE</b>				
Caramel <b>PF101-1</b>	100% Recycled Polyester	9.17 ± .35 oz/yd	66"	ASTM E-84, Class A or 1
Slate <b>PF101-2</b>				
Pewter <b>PF101-3</b>				
Verde <b>PF101-4</b>				
Twilight <b>PF101-5</b>				
Vintage <b>PF101-6</b>				
Java <b>PF101-7</b>				
Latte <b>PF101-8</b>				
<i>ALL FABRICS CONTAIN THE ABOVE SPECIFICATIONS.</i>				
<b>SILKY</b>				
Natural <b>PF401-1</b>				
Parids <b>PF401-2</b>				
Overcast <b>PF401-3</b>				
Field <b>PF101-4</b>				
Graphite <b>PF401-5</b>				
<b>STICKS</b>				
Smoke <b>PF501-1</b>				
Almond <b>PF501-2</b>				
Sage <b>PF501-3</b>				
Straw <b>PF501-4</b>				
<b>SKY</b>				
Terra <b>PF301-1</b>				
Birch <b>PF301-2</b>				
Moss <b>PF301-3</b>				

**NOTE:** Color may vary slightly between dye lots. Application testing of these products is recommended.